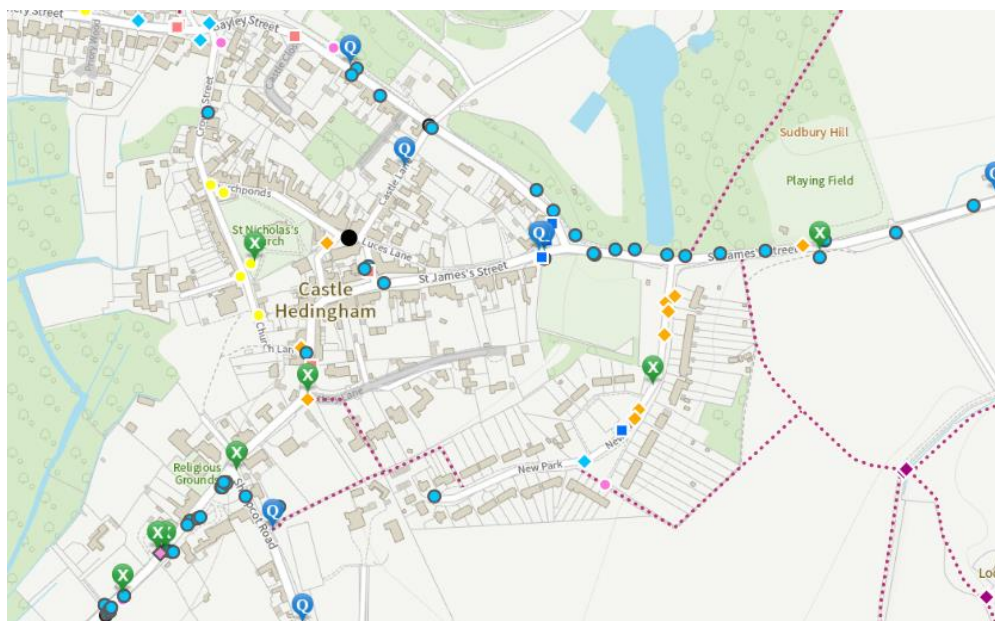


Castle Hedingham Parish Council and Burial Board
CLERK'S REPORT

Meeting Date	Minute Ref.	Agenda Number	Item	Action taken and outcome
PROGRESS CHECK				
Sept 21			Sudbury Rd/Maplestead Rd junction	Court order made permanent October 2021. Please continue to report breaches to planning.enforcement@braintree.gov.uk
July 21	1465	7.3	Verge cutting Delvyns Lane	BDC contractor has cut, and will do annually as part of the regular route in autumn. Alan & Clive are raking. Contacted Gestingthorpe PC to request sharing cost of their time between parishes.
Jun 21	1463	11	Memorial Hall damp	Guttering replaced. Village Hall reports interior remains dry so far.
Nov 20			Castle Village Volunteers	Smaller group established with Andy Smith as co-ordinator. Portable virtual local code telephone number purchased 01787 339787 .
Sept 20	1424	5.3	Village Sign Forge Green	Update Oct 21: Work in progress, including painting of the post.
HIGHWAYS & PROW issues – SEE PAGES 2 & 3				
Oct 20			Reported to ECC, Telent case no: CS0190333	40mph SID sign at Crouch Green. Cllr Schwier reports repair in hand with Telent
Jun 21	1460	7.2	Footpath 15	Cllr Beavis taking up repairs needed with ECC and BDC
Jun 21	1460	7.2	Footpath 19	Broken Bridge report to ECC PROW
Jun 21	1459	7.1	Village “Gateway signs” for speed reduction measure	A scheme submitted in July will have missed the funding opportunity for 2021/22 financial year so this will be assessed for suitability by engineers in readiness for the panel to make a decision in March 2022
Jun 21	1459	6.1	Keep Clear Road markings	Church Lane/Ruffles Yard/Church Ponds. Cllr Schwier reports this has to be done as routine maintenance due to vehicle size. No timescale given
Sept 20	1424	6.3	Damaged gully Lucas Lane:	Awaiting update on scheduled start date
Sept 19			STATION RD FOOTPATH	Damaged retaining bank and pothole on footpath has been reported to Highways and work was being scheduled in March 2020

Castle Heddingham Parish Council and Burial Board CLERK'S REPORT



Reference	Location	Issue	Last Inspected	Action
2578660	NUNNERY STREET, CASTLE HEDDINGHAM	disabled parking	OCT-2021	Receive Notifications
2595258	NUNNERY STREET, CASTLE HEDDINGHAM	disabled parking	OCT-2021	Receive Notifications
2679662	footpath 15 Castle Heddingham,	ploughing or cropping on prow	NOV-2020	Receive Notifications
2694724	QUEEN STREET, CASTLE HEDDINGHAM	highway drainage problems	OCT-2021	Receive Notifications
2700501	STATION ROAD, SIBLE HEDDINGHAM	fences and walls	OCT-2021	Receive Notifications
2700512	QUEEN STREET, CASTLE HEDDINGHAM	highway drainage problems	OCT-2021	Receive Notifications
2700910	QUEEN STREET, CASTLE HEDDINGHAM	highway drainage problems	OCT-2021	Receive Notifications
2709140	KIRBY HALL ROAD, CASTLE HEDDINGHAM	carriageway defects	JUN-2021	Receive Notifications
2720479	CHRISTMAS FIELD, SIBLE HEDDINGHAM	carriageway defects	OCT-2021	Receive Notifications
2720631	CHURCH LANE, CASTLE HEDDINGHAM	lining defects	OCT-2021	Receive Notifications

Showing 1 to 10 of 25 entries

Previous 1 2 3 Next

Reference	Location	Issue	Last Inspected	Action
2722909	NUNNERY STREET, CASTLE HEDDINGHAM	footway defects	OCT-2021	Receive Notifications
2724686	NEW PARK, CASTLE HEDDINGHAM	carriageway defects	OCT-2021	Receive Notifications
2725592	QUEEN STREET, CASTLE HEDDINGHAM	vegetation problems	OCT-2021	Receive Notifications
2734604	SUDBURY ROAD, CASTLE HEDDINGHAM	highway drainage problems	OCT-2021	Receive Notifications
2735873	QUEEN STREET, CASTLE HEDDINGHAM	carriageway defects	OCT-2021	Receive Notifications
2737667	CHRISTMAS FIELD, SIBLE HEDDINGHAM	carriageway defects	OCT-2021	Receive Notifications
2738836	NUNNERY STREET, CASTLE HEDDINGHAM	debris/deposit on highway land	OCT-2021	Receive Notifications
2741409	SHEEPCOT ROAD, CASTLE HEDDINGHAM	vegetation problems	JAN-2021	Receive Notifications
2742108	CHRISTMAS FIELD, SIBLE HEDDINGHAM	carriageway defects	OCT-2021	Receive Notifications
2742874	SHEEPCOT ROAD, CASTLE HEDDINGHAM	defective surface cover	JAN-2021	Receive Notifications

Showing 11 to 20 of 25 entries

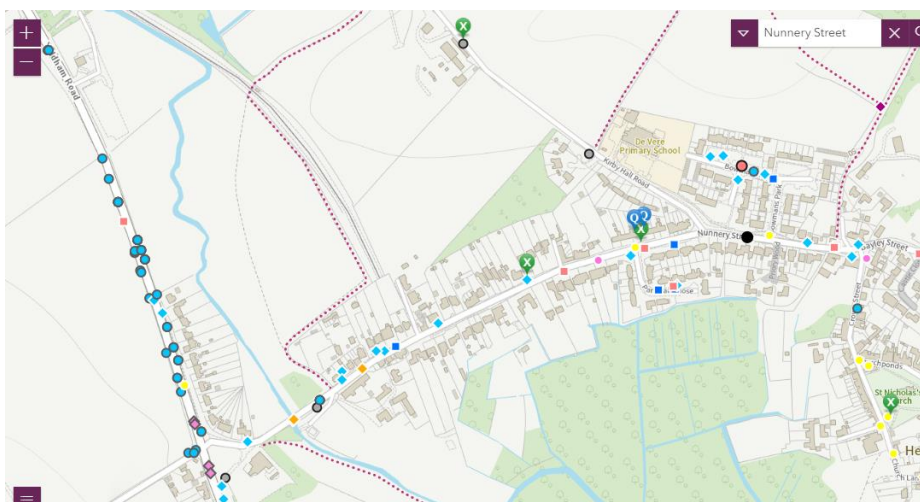
Previous 1 2 3 Next

Reference	Location	Issue	Last Inspected	Action
2744937	ST JAMES STREET, CASTLE HEDDINGHAM	highway drainage problems	AUG-2021	Receive Notifications
2745715	BAYLEY STREET, CASTLE HEDDINGHAM	skip licence	OCT-2021	Receive Notifications
2746469	ST JAMES STREET, CASTLE HEDDINGHAM	highway drainage problems	AUG-2021	Receive Notifications
2746726	CASTLE LANE, CASTLE HEDDINGHAM	highway drainage problems	OCT-2021	Receive Notifications
2746728	SUDBURY ROAD, CASTLE HEDDINGHAM	carriageway defects	OCT-2021	Receive Notifications

Showing 21 to 25 of 25 entries

Previous 1 2 3 Next

Castle Hedingham Parish Council and Burial Board CLERK'S REPORT



Reference	Location	Issue	Last Inspected	Action
2722909	NUNNERY STREET, CASTLE HEDINGHAM	footway defects	OCT-2021	Receive Notifications
2595258	NUNNERY STREET, CASTLE HEDINGHAM	disabled parking	OCT-2021	Receive Notifications
2578660	NUNNERY STREET, CASTLE HEDINGHAM	disabled parking	OCT-2021	Receive Notifications
2738836	NUNNERY STREET, CASTLE HEDINGHAM	debris/deposit on highway land	OCT-2021	Receive Notifications
2742108	CHRISTMAS FIELD, SIBLE HEDINGHAM	carriageway defects	OCT-2021	Receive Notifications
2737667	CHRISTMAS FIELD, SIBLE HEDINGHAM	carriageway defects	OCT-2021	Receive Notifications
2725592	QUEEN STREET, CASTLE HEDINGHAM	vegetation problems	OCT-2021	Receive Notifications
2679662	footpath 15 Castle Hedingham,	ploughing or cropping on prow	NOV-2020	Receive Notifications
2694724	QUEEN STREET, CASTLE HEDINGHAM	highway drainage problems	OCT-2021	Receive Notifications
2741409	SHEEPCOT ROAD, CASTLE HEDINGHAM	vegetation problems	JAN-2021	Receive Notifications

Showing 1 to 10 of 29 entries

Previous 1 2 3 Next

Reference	Location	Issue	Last Inspected	Action
2720479	CHRISTMAS FIELD, SIBLE HEDINGHAM	carriageway defects	OCT-2021	Receive Notifications
2700501	STATION ROAD, SIBLE HEDINGHAM	fences and walls	OCT-2021	Receive Notifications
2700512	QUEEN STREET, CASTLE HEDINGHAM	highway drainage problems	OCT-2021	Receive Notifications
2700910	QUEEN STREET, CASTLE HEDINGHAM	highway drainage problems	OCT-2021	Receive Notifications
2715580	ROOKWOODS ROAD, SIBLE HEDINGHAM	carriageway defects	OCT-2021	Receive Notifications
2687155	ROOKWOODS ROAD, SIBLE HEDINGHAM	carriageway defects	OCT-2021	Receive Notifications
2495092	YELDHAM ROAD, SIBLE HEDINGHAM	footway defects	OCT-2021	Receive Notifications
2693261	YELDHAM ROAD, SIBLE HEDINGHAM	verge defects	OCT-2021	Receive Notifications
2739968	YELDHAM ROAD, SIBLE HEDINGHAM	defective surface cover	OCT-2021	Receive Notifications
2720631	CHURCH LANE, CASTLE HEDINGHAM	lining defects	OCT-2021	Receive Notifications

Showing 11 to 20 of 29 entries

Previous 1 2 3 Next

Reference	Location	Issue	Last Inspected	Action
2742874	SHEEPCOT ROAD, CASTLE HEDINGHAM	defective surface cover	JAN-2021	Receive Notifications
2744937	ST JAMES STREET, CASTLE HEDINGHAM	highway drainage problems	AUG-2021	Receive Notifications
2734604	SUDBURY ROAD, CASTLE HEDINGHAM	highway drainage problems	OCT-2021	Receive Notifications
2746469	ST JAMES STREET, CASTLE HEDINGHAM	highway drainage problems	AUG-2021	Receive Notifications
2735873	QUEEN STREET, CASTLE HEDINGHAM	carriageway defects	OCT-2021	Receive Notifications
2746726	CASTLE LANE, CASTLE HEDINGHAM	highway drainage problems	OCT-2021	Receive Notifications
2745715	BAYLEY STREET, CASTLE HEDINGHAM	skip licence	OCT-2021	Receive Notifications
2724686	NEW PARK, CASTLE HEDINGHAM	carriageway defects	OCT-2021	Receive Notifications
2709140	KIRBY HALL ROAD, CASTLE HEDINGHAM	carriageway defects	JUN-2021	Receive Notifications

Showing 21 to 29 of 29 entries

Previous 1 2 3 Next